

GOVERNMENT OF INDIA  
INDIA METEOROLOGICAL DEPARTMENT  
METEOROLOGICAL CENTRE, GOA  
ALTINHO, PANAJI, 403001



[Kindly download Mausam app for location specific forecast and warning, Meghdoot app for Agro met advisory and Damini app for Lightning](#)

## तात्कालिक मौसम चेतावनी/ Nowcast Weather Warning

Warning Code/  
चेतावनी कोड:-

**Watch: (Be Alert)**

Date & Time of issue: - 0100 HRS, July 4, 2024.  
Date & Time of validity: -0400 HRS, July 4, 2024.

- ❖ Moderate rain very likely to occur at most places with Heavy to Very Heavy rainfall very likely to occur at Isolated places with strong surface wind gusting to 40 - 50 kmph over North Goa and South Goa Districts during Next 1-3 hours.
- ❖ At 1300 hrs clouds are present over most of the talukas of North and south Goa.
- ❖ Clouds are developing and moving in Eastwards direction.

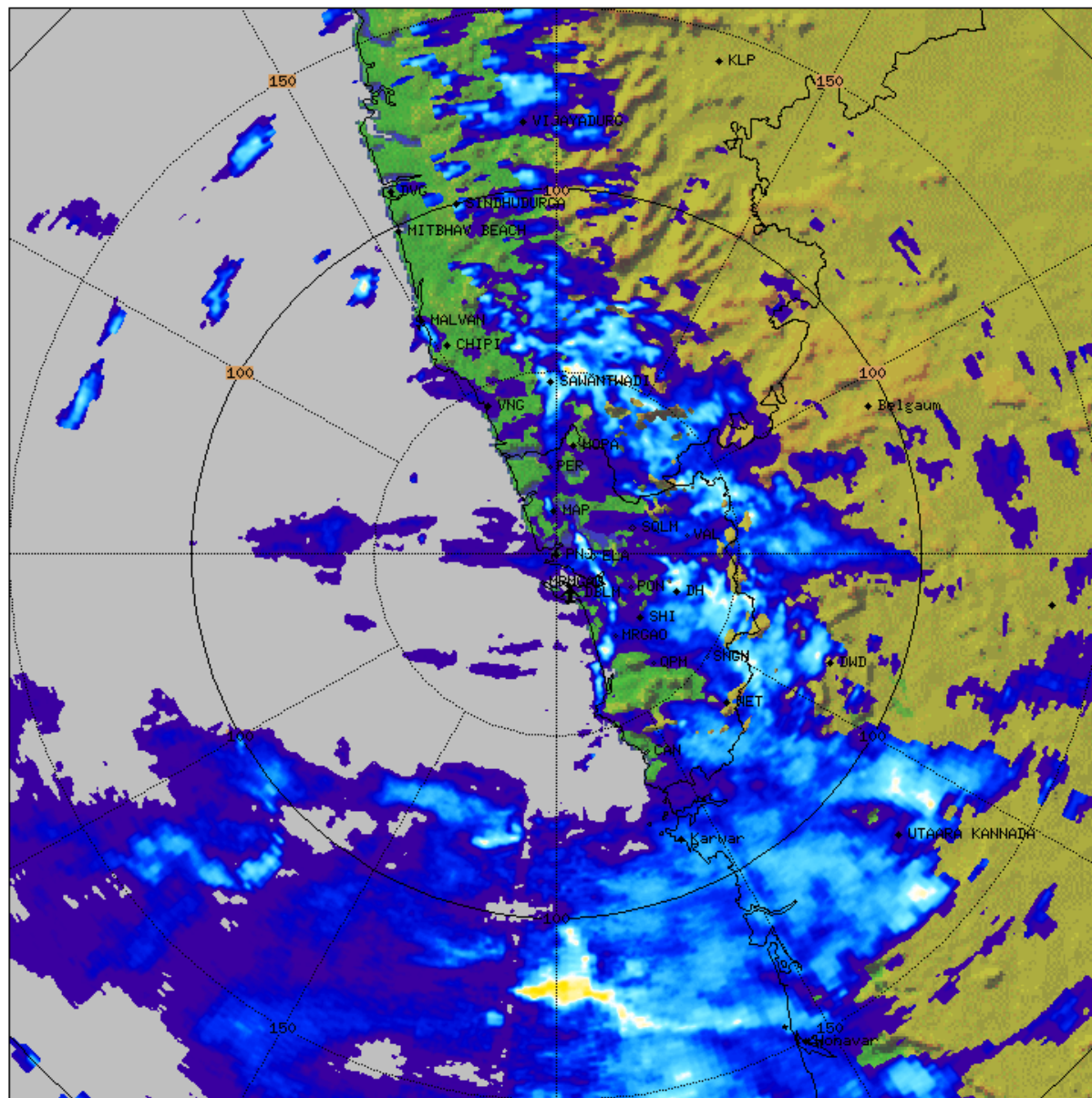
**⚡ Avoid going to areas that face the water logging problems often ⚡ Check for traffic congestion on your route before leaving for your destination. ⚡ Avoid staying in vulnerable structures. ⚡ Please be updated with the forecasts and Nowcasts issued by IMD.**

**⚡ Please click here to see the latest weather radar products ⚡ Please click here for GIS based district wise nowcast ⚡ Please click here for GIS based station wise nowcast.**

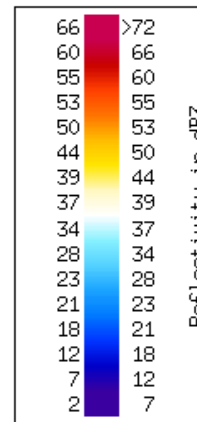
Intensity of Rainfall		Probability of Occurrence (%)		Distribution of Rainfall		Intensity of Rainfall Spells	
Type	Amount (mm)			Category	% of stations	Terminology	Rainfall rate
Very Light	0.1 to 2.4	Likely	26 - 50	Most Places	76 - 100%	Light Spell	<1 cm/hr
Light	2.5 - 15.5	Very Likely	51 - 75	Many Places	51-75%	Moderate Spell	1-2 cm/hr
Moderate	15.6 - 64.4	Most Likely	> 75	A Few Places	26-50%	Intense Spell	2-3 cm/hr
Heavy	64.5 - 115.5			Isolated places	1-25%	Very Intense Spell	3-5 cm/hr
Very Heavy	115.6 - 204.4			Dry	0	Extremely Intense Spell	5-10 cm/hr
Extremely Heavy	≥ 204.5					Cloud Burst	>10 cm/hr

राष्ट्र सेवा के 150 वर्ष

# Doppler Weather Radar Images



GOA-RADAR  
PPI  
PPI\_Z\_150  
Task: IMD-B  
PRF:600/450  
Elevation:1.0  
Max Range:150 km  
**07:47:00Z**  
4 JUL 2024 UTC



Please be updated regularly with latest forecasts and warnings issued, from IMD Goa website <https://mausam.imd.gov.in/goa/>

YouTube: Twitter: Facebook: Forecasts and Warnings are based on the latest available observations and NWP model outputs.